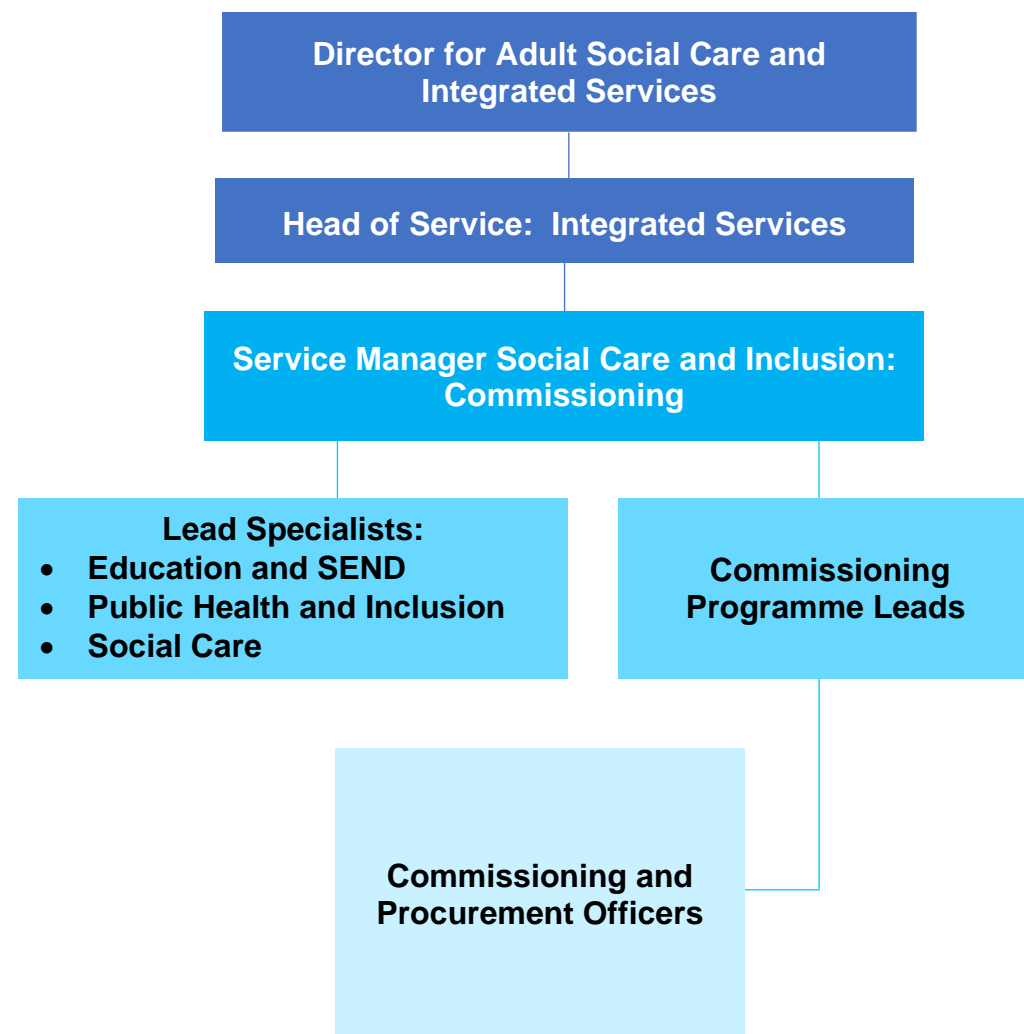
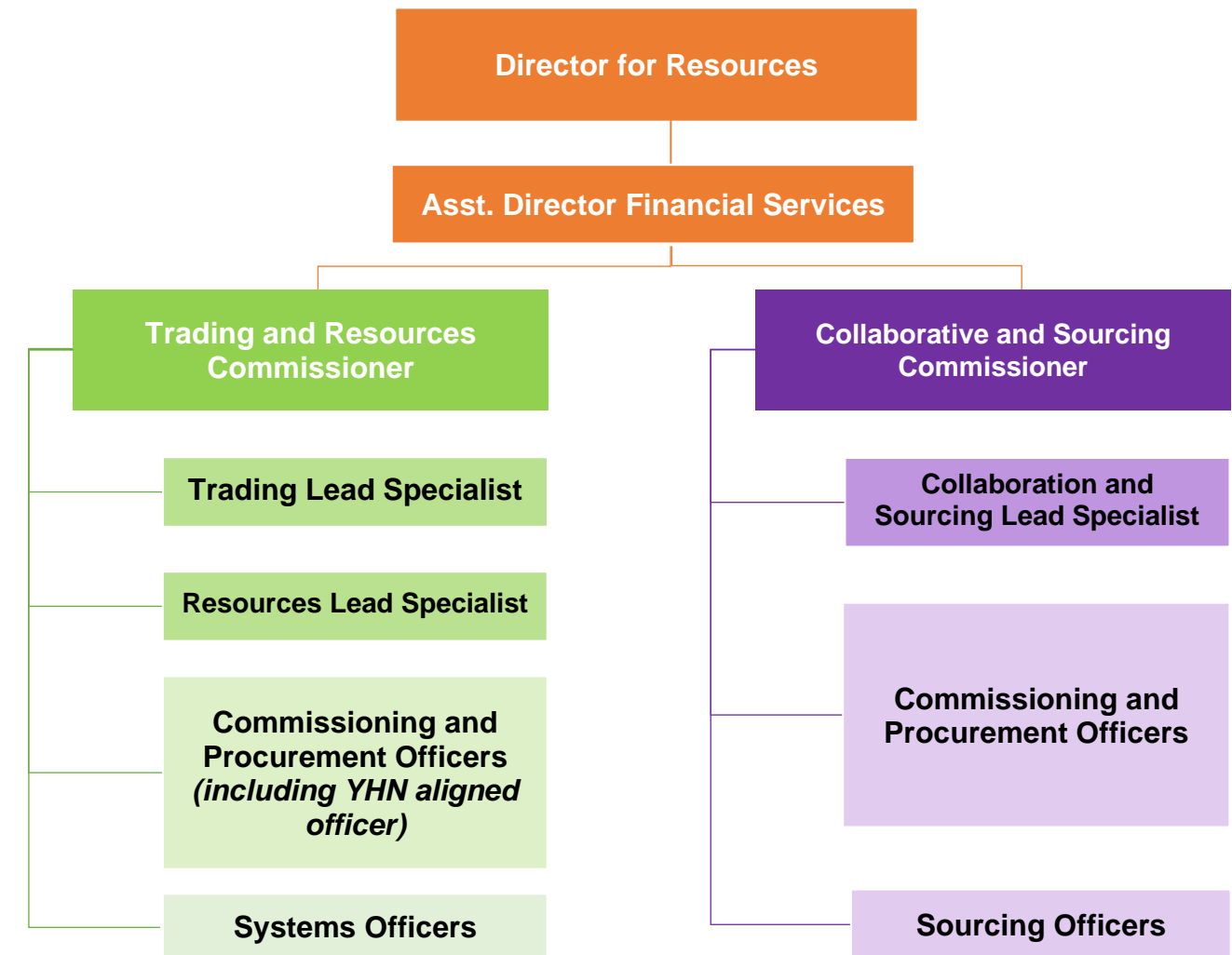


# Appendix 2: Commissioning and Procurement Structure and Categories



- Main Categories**
- Active inclusion, including homelessness, financial inclusion, supported employment
  - Domestic violence and abuse
  - Early help and family support
  - Education
  - Information, advice and advocacy in relation to care needs (all ages)
  - Looked after children
  - Older people's services, including residential care, home care, day services
  - Public Health: children and young people public health services, drugs and alcohol, public health mental health services, obesity nutrition and physical activity, sexual health, stop smoking, wellbeing and health improvement
  - SEND
  - Specialist social care services (all ages), including learning disability, physical disability, mental health services
  - Supporting community action, including Newcastle Fund grants
  - Support for carers
  - Youth services



- Main Categories**
- ICT and telecoms
  - Environment and neighbourhoods, including: environmental services, horticultural services, hygiene services, public and product safety, waste and recycling
  - Housing and facilities management
  - Communications and marketing
  - Building construction
  - Culture and sport
  - Burials and crematoria

- Main Categories**
- Legal services, including: election services
  - Finance
  - Civil engineering and highways
  - Travel and transport
  - Staff services, including: consultancy, professional advisory, training services and technical consultancy
  - Organisational supplies
  - Lifts and escalators
  - Asbestos and demolition
  - Energy